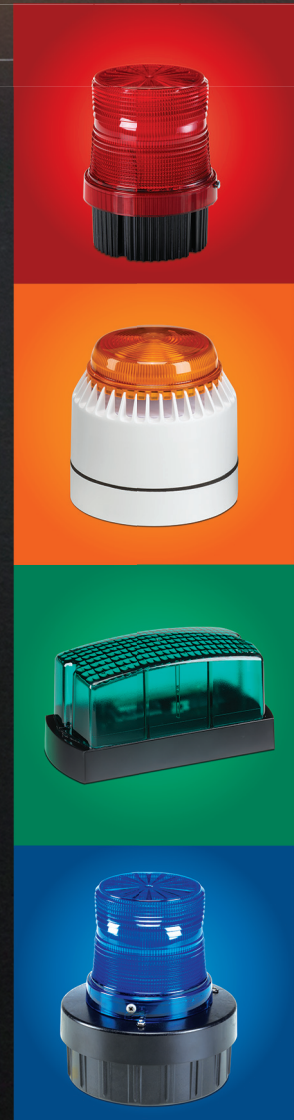


Panel Mount

Audible and Visual Signals



WE PROTECT

Federal Signal is recognized as one of the industry's leading suppliers of safety and security products since 1901. Today, our team remains committed to the demand for value-added products, **incorporating innovative engineering to offer our customers quality product solutions.**

100+
YEARS

Federal Signal products come with our commitment to exceptional customer service and technical support. Working closely with customers globally, our customer support team, engineers, and technicians **provide a full range of products to assist with any application.**

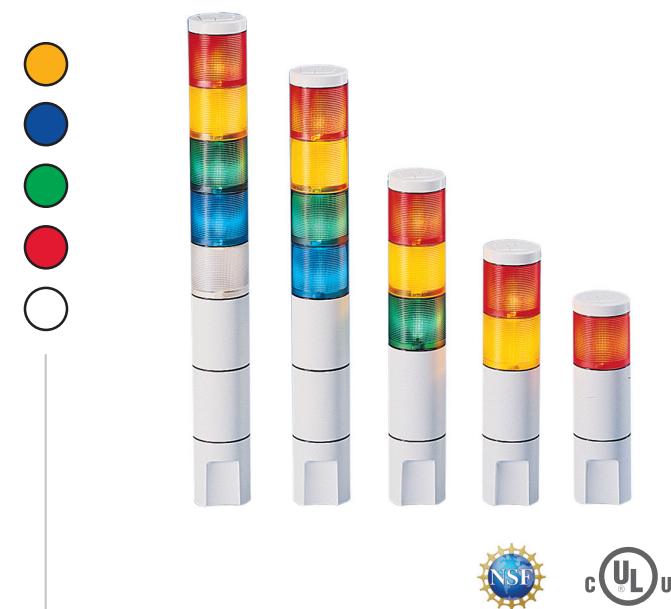


Radiant Stack Light

MODEL RSL

FEATURES

- Available in 12-24VAC/DC or 120-240VAC
- Single Color Configuration allows up to:
 - > 7 light modules
 - > 6 light modules + 1 sound module (1 channel)
 - > 5 light modules + 1 sound module (2 channels)
- Multicolor Configurations allows up to:
 - > 2 RGB multicolor LED module and 1 sound module (1 channel)
 - > 1 RGB multi-color LED module, 2 fixed color LED modules and 1 sound module (2 channels)
- Multipattern light, steady light, steady bright light, wiring modules, optional sound modules, and bases are sold separately
- Optional sound modules produce 77 dBa @ 10' (87 dBa @ 1M) or 50-80 dBa @ 10' (60-90 dBa @ 1M) with two or sixteen tones
- Available in gray or black housings
- Type 4X, IP65 enclosure, IP69K compliant enclosure when installed with both gaskets included on each module



MicroStat Status Indicator

MODEL MSL

FEATURES

- Available in 24VAC/DC or 120VAC
- Two flash patterns: Steady burn and 75FPM
- Pre-assembled as 1-, 2-, 3-, 4-, 5- high light units
- Optional sound module produces 83-85 dBa @ 10' (93-95 dBa @ 1M)
- 50,000 hour LED
- Type 4X enclosure**

*MSL with optional sounder rated NEMA Type 1

Litestak® LED Status Indicator

MODELS LSLD

FEATURES

- Available in 24VDC and 120VAC
- Two flash patterns; Steady and Flashing
- Up to five light modules or four light modules plus one optional sound module can be assembled per unit
- Optional sound module (LSH) produces 75-77 dBa @ 10' (85-86 dBa @ 1M)
- 50,000 hour LED
- Type 1 enclosure



StreamLine® Low Profile Combination Sounder/Strobe

MODEL LP7

FEATURES

- Available in 18-28VDC
- One flash pattern: 60FPM
- 82-100 dBa @ 10' (92-110 dBa @ 1m)
- 32 Tones
- 10,000 hour strobe tube
- IP54 (IP65 with optional deep base)

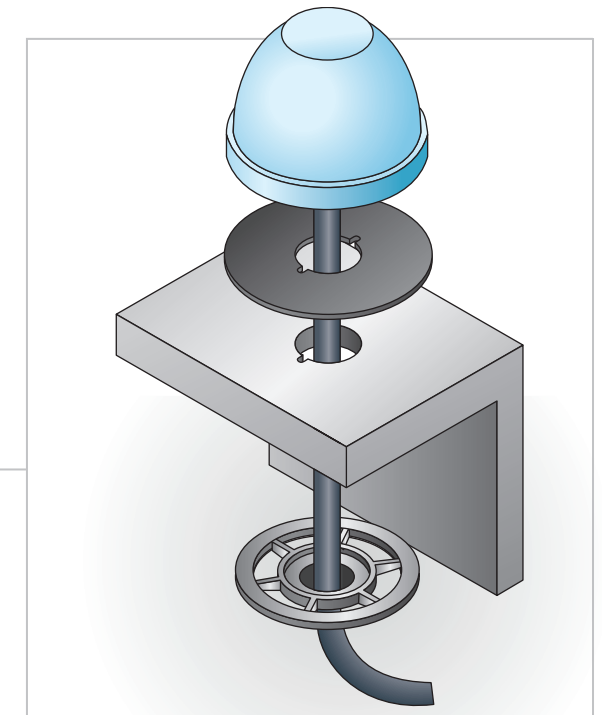


Panel Mount Overview

Visual and audible panel mount products in industrial signaling refer to a type of signaling devices that are designed to be mounted directly onto a control panel or equipment panel. These products provide visual and audible signals for indicating various statuses, warnings, or alarms and are commonly used in manufacturing plants, process industries, and other industrial environments where visual and audible communication is crucial for safety and operational efficiency.

Federal Signal's panel mount offering is designed to be easily mounted onto the surfaces of control panels or machinery and meet the industry standards and regulations needed for safety and signaling.

All products are engineered to be highly visible, even in challenging industrial environments where there may be high levels of ambient noise and visual obstructions. Given the harsh conditions in industrial settings, Federal Signal's panel mount signals are built to be durable and resistant to environmental factors such as moisture, dust, and temperature fluctuations. This durability ensures the longevity and reliability of the signaling devices.

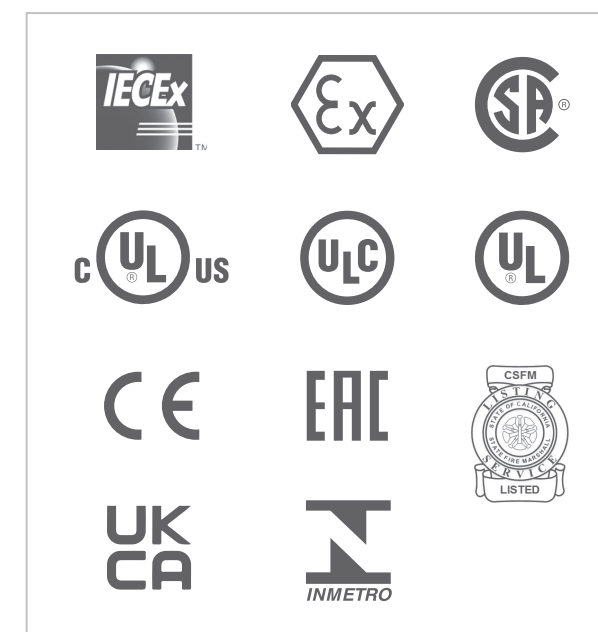


Panel mount lights are just one component of a broader industrial signaling system, which may include other devices such as horns, buzzers, sirens, and audible alarms. **The goal of panel mount devices is to enhance safety, provide clear communication, and facilitate efficient operation in industrial environments.**

Federal Signal Certifications

Our Federal Signal products have been designed to meet or exceed the uncompromising standards of UL, cUL, ULC, CSA, ATEX, IECEx, CE, UKCA and other global certifications.

And with our ISO 9001 Certification, Federal Signal demonstrates its ongoing commitment to quality. Achieving certification is just the beginning.



Panel Mount Signaling Approval Types



UL LISTED VISUAL SIGNALING APPLIANCES
UL 1638A Visual Signaling Appliances for General Signaling, intended for non-emergency use in ordinary locations. These requirements cover electrically operated visual signaling appliances rated 300 volts or less, intended for indoor locations, outdoor locations, or both, per the National Electrical Code, NFPA 70.

UL LISTED AUDIBLE SIGNALING APPLIANCES
UL 464A Audible Signaling Appliances for general signaling use, intended for non-emergency use in ordinary locations. These requirements cover electrically and electronically operated bells, buzzers, horns, and similar audible signal appliances, rated 300 volts or less, intended for indoor or outdoor locations or both in accordance with the National Electrical Code, NFPA 70.



CUL LISTED VISUAL SIGNALING APPLIANCES
CSA Standard C22.2 No. 205 Signaling Appliances, Canadian Standards Association. Equivalent to UL1638A

CUL LISTED AUDIBLE SIGNALING APPLIANCE
CSA Standard C22.2 No. 205 Signaling Appliances, Canadian Standards Association. Equivalent to UL464A.

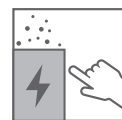


CE AND UKCA CERTIFICATIONS
CE and UKCA marking affirms conformity with European health, safety, and environmental protection standards. The CE and UKCA marking is found on products manufactured to European Economic Area (EEA) and UK standards complying with Low Voltage Directive and EMC Directive.

NEMA Ratings

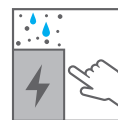
National Electrical Manufacturers Association

NEMA 1



GENERAL PURPOSE, INDOOR
To prevent accidental contact of personnel with the enclosed equipment in areas where unusual service conditions do not exist. Provides protection against falling dirt.

NEMA 2



DRIP-PROOF, INDOOR
Similar to Type 1, but also protects against falling non-corrosive liquids and falling dirt. Drainage provisions provided.

NEMA 3



DUST-TIGHT, RAIN-TIGHT, SLEET-RESISTANT, OUTDOOR
Protected Against windblown dust and water.

NEMA 3R



RAINPROOF, SLEET-RESISTANT, OUTDOOR
Protected against rain.

NEMA 3S



DUST-TIGHT, RAIN-TIGHT AND SLEET-PROOF, OUTDOOR
Protected against wind blown dust and water, remains operable when covered by external ice or sleet. [Not protected against internal icing.]

NEMA 4



WATER-TIGHT AND DUST-TIGHT, INDOOR AND OUTDOOR
Protected against wind-blown dust and rain, splashing water, seepage water, falling or hose-directed water, and severe external condensation. Mountings are external to cavity.

NEMA 4X



WATER-TIGHT, DUST-TIGHT, INDOOR AND OUTDOOR
Same as Type 4 but also corrosion-resistant. Passes 200-hr. salt spray (fog) test.

StreamLine® Modular Multifunctional Combination Audible/Visual Signal

MODELS SLM500 & SLM600

FEATURES

- Available in 12-24VAC/DC or 120-240VAC
- Three flash patterns: 3x Strobe (Default), Fade and Steady
- SLM500: 76-95 dBa @ 10' (86-105 dBa @ 1M)
- SLM600: 89-105 dBa @ 10' (99-115 dBa @ 1M)
- 100,000 hour LED
- 3 Channels included
 1. Visual signal only
 2. Visual signal + tone 1
 3. Visual signal + tone 2
- Type 3R, IP65 enclosure



LED Flashing or Strobe Combination Audible/Visual Signal

MODELS AV1

FEATURES

- Available in 24VDC and 120VAC
- Three flash patterns; steady, 60FPM, or 75FPM
- 85 dBa @ 10' (95 dBa @ 1M)
- 50,000 hour LED
- Can operate as LED/Buzzer combination or LED only
- Type 3R



Panel Mount Multifunctional LED Combination Audible/Visual Signal

MODEL PMC

FEATURES

- Available in 12-24VAC/DC or 48-240VAC
- 75 dB @ 10' (85 dB @ 1M)
- 50,000 hour LED
- 3 channels included:
 1. Flashing Light
 2. Flashing Light & Intermittent Sound
 3. Steady Light & Continuous Sound
- Transparent polycarbonate lens
- Type 3R, IP65 enclosure, IP69K compliant



Panel Mount 22mm Multifunctional LED Audible/Visual Combination Signal

MODEL PM22C & PM22C RGB

FEATURES

- PM22C models are available in 12-24VAC/DC
- PM22C RGB models are available in 24VDC
- 82 dBa @ 10' (92 dBa @ 1M)
- PM22C models are single color and feature
 - > 7 flash/tone combinations:
 - > Steady Light
 - > Continuous Tone
 - > Steady light + Tone
 - > Strobe + Intermittent Tone SYNC
 - > 2x flash + 2x Intermittent Tone SYNC
 - > 3x flash + 3x Intermittent Tone SYNC
 - > Random Light + Random Tone
- PM22C RGB models are steady burn and have 7 colors in one unit
- 50,000 hour LED
- Choice of M12 cable gland or M12 4-pin quick connect (-Q models) electrical connections
- Type 3R, IP65 enclosure



IP Rating

Ingress Protection

SOLID PROTECTION		WATER PROTECTION	
	0 No Protection		0 No Protection
	1 Protected against a solid object greater than 50 mm, such as a hand.		1 Protected against vertical dripping water. Limited liquid entry.
	2 Protected against a solid object greater than 12 mm, such as a finger.		2 Protected against vertical dripping water when tilted up 15°. Limited liquid entry.
	3 Protected against a solid object greater than 2.5 mm, such as a screwdriver.		3 Protected against spraying water at an angle of 60°. Limited liquid entry.
	4 Protected against a solid object greater than 1 mm, such as most screws and wires.		4 Protected against splashes of water at any angle. Limited liquid entry.
	5 Dust, limited ingress from all directions.		5 Protected against low pressure water jets from any direction. Limited liquid entry.
	6 Total protection against dust.		6 Protected against high pressure water jets from any direction. Limited liquid entry.
			7 Protected against the effects of immersion in water between 15 cm and 1 m for 30 minutes.
			8 Protected against the effects of immersion in water under pressure for long periods.
			9 Protected from close-range, powerful, high-temperature water jets.

Model Specification

MODEL	SPECIFICATIONS						
	LIGHT SOURCE	LIGHT PATTERN	MOUNTING TYPE	VOLTAGE	RATINGS	ELECTRICAL CONNECTION	APPROVALS
PM22L	LED	Steady, Slow Flash, Fast, 2x Flash, 3x Flash, Strobe, Random	Through Hole 22mm (0.87") diameter	12-24VAC/DC	4X, IP66, IP69K	M12 4-Cond. 12" Cable or 4 pin Quick Connect	UL, cUL, CE, UKCA
PM22L RGB	LED	Steady	Through Hole 22mm (0.87") diameter	24VDC	4X, IP66, IP69K	M12 4-Cond. 12" Cable or 4 pin Quick Connect	UL, cUL, CE, UKCA
PMLMP	LED	Steady, 1x Flash, 5x Flash	Through Hole 30mm (1.18") diameter	12-24VAC/DC 48-240VAC	4X, IP66, IP69K	Terminal Block	UL, cUL, CE, UKCA
PMLST	LED	Steady	Through Hole 30mm (1.18") diameter	12-24VAC/DC 90-240VAC	4X, IP66, IP69K	Terminal Block	UL, cUL, CE, UKCA
LP57	LED	Steady	Surface Mount	24VDC	4X, IP66, IP69K	M-12 Cable Gland or M12 4-pin Quick Connect	UL, cUL, CE, UKCA
LP57 RGB	LED	1x Flash	Surface Mount	24VDC	4X, IP66, IP69K	M-12 Cable Gland or M12 4-pin Quick Connect	UL, cUL, CE, UKCA
LP3	Strobe	80FPM	1/2" NPT Pipe Mounts, T base for wall/flush mounting, surface mount	12-48VDC, 120VAC, or 240VAC	4X, IP66	Wire Leads or Terminal Block (DC) Terminal Block (AC)	UL, cUL, CSA, CE, UKCA
LP3L	LED	Steady	1/2" NPT Pipe Mounts, T mount, surface mount	24VDC or 120VAC	4X, IP66, IP69K	Wire Leads	UL, cUL, CSA, CE, UKCA
LP1	Strobe	80FPM	Surface Mount	12VDC, 24VDC, 120VAC	4X	Terminal Block	UL, cUL
SLM100	LED	Steady, Flashing, Rotating	Seven Mounting Base Options	12-24VAC/DC 120-240VAC*	4X, IP66, IP69K**	Terminal Block	UL, cUL, CE, UKCA
SLM1400/1450	LED	Steady, 1x, 3x, 5x Flash, Random	Seven Mounting Base Options	12-24VAC/DC 120-240VAC*	4X, IP66, IP69K**	Terminal Block	UL, cUL, CE, UKCA
SLM200	LED	1x 120FPM, 1x Flash 85 FPM, 4x Flash, Random	Seven Mounting Base Options	12-24VAC/DC 120-240VAC*	4X, IP66, IP69K**	Terminal Block	UL, cUL, CE, UKCA
SLM300/350	LED	Steady, 1x Flash, 5x Flash	Seven Mounting Base Options	12-24VAC/DC 120-240VAC*	4X, IP66, IP69K**	Terminal Block	UL, cUL, CE, UKCA
FB2LED	LED	Steady, 60FPM, 120FPM	1/2" NPT Pipe and Surface Mount	12-24VDC or 120-240VAC	4X, IP66, IP69K	Wire Leads	UL, cUL
LP22LED	LED	Steady, 1x Flash, 2x Flash, 3x Flash	1/2" NPT Male Pipe and Surface Mount	12-24VAC/DC or 90-240VAC	4X, IP66	Wire Leads	UL, cUL, CE, UKCA
LP22 RGB	LED	Steady	1/2" NPT Male Pipe and Surface Mount	12-24VDC or 90-240VAC	4X, IP66	Wire Leads	UL, cUL, CE, UKCA

*Voltage is dependent on selected base (sold separately) **IP69K with select bases SLMBS, SLMBP, and included SLM-RR accessory

Model Specification

MODEL	SPECIFICATIONS									
	LIGHT/SOUND SOURCE	LIGHT PATTERN	SOUNDER	MOUNTING TYPE	VOLTAGE	RATINGS	ELECTRICAL CONNECTION	DBA @ 10	VOLUME CONTROL	APPROVALS
PMC	LED/Electronic Buzzer	Steady, Flashing	Continuous or Intermittent Tones	Through Hole 30mm (1.18") diameter	12-24VAC/DC or 48-240VAC	3R, IP65, IP69K	Terminal Block	75	N/A	UL, cUL, CE, UKCA
PM22C	LED/Electronic Buzzer	Steady, 2x Flash, 3x Flash, Strobe, Random	Continuous, or Intermittent Tones	Through Hole 22mm (0.87") diameter	12-24VAC/DC	3R, IP65	M12 4-Cond. 12" Cable or 4 pin Quick Connect	82	N/A	UL, cUL, CE, UKCA
PM22C RGB	LED/Electronic Buzzer	Steady	Continuous Tone	Through Hole 22mm (0.87") diameter	24VDC	3R, IP65	M12 4-Cond. 12" Cable or 4 pin Quick Connect	75	N/A	UL, cUL, CE, UKCA
SLM500	LED/Piezo Sounder	3x Flash, Fade, Steady, Off	Multi-Tone, 32 Tones Per Channel	7 mounting options	12-24VAC/DC or 120-240VAC	3R, IP65	Electronic Contacts	76-95	3 Increments	UL, cUL, CE, UKCA
SLM600	LED/Piezo Sounder	3x Flash, Fade, Steady, Off	Multi-Tone, 32 Tones Per Channel	7 mounting options	12-24VAC/DC or 120-240VAC*	3R, IP65	Electric Contacts	105	3 Increments	UL, cUL, CE, UKCA
AV1-LED	LED / Electronic Buzzer	Steady, 60FPM, 75FPM	Continuous or Intermittent Tones	1/2" NPT or Surface Mount	24VDC, 120VAC	3R	Wire Leads or Terminal Block	85	N/A	UL, cUL, CSA
LSLD	LED/Optional Piezoelectronic Horn (LSH)	Steady or Flashing	Continuous Tone	3/4" NPT or Surface Mount	24VDC, 120VAC	Type 1	Wire Leads	75-77	N/A	UL, cUL, CSA
LP7	Xenon strobe/ Piezo Sounder	60 FPM	32 Tones	Surface Mount	18-28VDC	IP54 (IP65 with optional deep base)	Terminal Block	82-100	N/A	CE, UKCA
RSL	LED/ Piezoelectric Horn	Steady or multi-pattern	2 or 16 Tones	Surface, Wall, 1/2" NPT Pipe, Extended or 4x Tube Base Lengths	12-24VAC/DC or 120-240VAC	4X, IP65, IP69K	Terminal Block	77	w/ RSL-SMM Sound Module	UL, cUL, CE, UKCA
MSL	LED/ Electronic Optional Piezo Sounder	Steady or Flashing	Continuous	3/4" NPT Pipe Mount, Surface Mount	24VAC/DC or 120VAC	4X	Terminal Block	83-85	N/A	UL, cUL

*Voltage is dependent on selected base (sold separately)

**IP69K compliant when installed with both gaskets included with each model

StreamLine® Low Profile Mini Sounder

MODEL LP4

FEATURES

- Operates on 9-28VDC
- 82-100 dBa @ 10' (92-110 dBa @ 1m) with 20 dBa of adjustment
- Choice of 32 tones
- Remote activation up to two tones
- IP54 enclosure (IP65 with optional deep base)



Panel Mount 22mm Multifunctional LED

MODELS PM22L & PM22L RGB

FEATURES

- Available in 12-24VAC/DC or 24VDC
- Single color models have seven flash patterns; Steady, Slow Flashing, Fast Flashing, 2x Flash, 3x Flash, Strobe, and Random
- Multicolor models feature seven colors and steady burn
- 50,000 Hour LED
- Type 4X, IP66 enclosure, IP69K compliant



Panel Mount Multifunctional LED Beacon

MODELS PMLMP & PMLST

FEATURES

- Available in 12-24VAC/DC or 48-240VAC
- PMLST models steady burn
- PMLMP models have three flash patterns; Steady, Flashing & Simulated Strobe
- 50,000 Hour LED
- Type 4X, IP66 enclosure, IP69K compliant



StreamLine® Mini LED Beacon Series

MODELS LP57 & LP57 RGB

FEATURES

- Available in 24VDC
- Multicolor models feature seven colors and have one flash pattern; 120FPM
- Single color models steady burn
- 100,000 Hour LED
- Type 4X, IP66 enclosure, IP69K compliant



StreamLine® Low Profile LED (LP3L) or Strobe (LP3) Lights

MODELS LP3 & LP3L

FEATURES

- LP3 is available in 12-48VDC, 120VAC and 240VAC; LP3E is 120VAC only
- LP3L is available in 24VDC and 120VAC
- LP3 has 80 FPM and features a 4,000 hour strobe tube
- LP3L is steady burn and features a 50,000 hour LED
- Five mounting options; Edison (E), 1/2-inch NPT male pipe (M), Surface (S), T-mount (T), integrated 1/2" NPT pipe (p)
- Optional wire lens guard
- Type 4X, IP66 enclosure - LP3SL, LP3PL, LP3ML, LP3M, LP3P, LP3S, LP3E, LP3T
- Type 4X, IP55 enclosure - LP3TL
- IP69K compliant - LP3SL, LP3PL, LP3ML, LP3M, LP3P, and LP3S



StreamLine® Low Profile Mini Strobe

MODEL LP1

FEATURES

- Available in 12VDC, 24VDC, and 120VAC
- One flash pattern; 80 FPM
- 4,000 hour strobe tube
- Type 4X



StreamLine® Modular Multifunctional LED Beacon

MODELS SLM100 & SLM200

FEATURES

- Available in 12-24VAC/DC or 120-240VAC
- SLM100 have three flash patterns; Steady, Flashing and Rotating
- SLM200 have three flash patterns; Flashing, Strobe, and Random
- 100,000 hour LED
- Seven mounting base options
- Type 4X, IP66 enclosure, IP69K compliant



Panel Mount Electronic Sounder

MODELS PMA & PMAMT

FEATURES

- PMA models are available in 12-24VAC/DC or 90-240VAC
- PMAMT models are available in 12-24VAC/DC or 48-240VAC
- PMA; Continuous tone and produces 60 dBa @ 10' (70 dBa @ 1M)
- PMAMT; Continuous and intermittent tones and produces 75 dBa @ 10' (85 dBa @ 1M)
- Type 3R, IP65 enclosure



Panel Mount 22mm Electronic Sounder

MODEL PM22A

FEATURES

- Available in 12-24VAC/DC
- 82 dBa @ 10' (92 dBa @ 1M)
- Seven tones; Steady, Slow Intermittent, Fast Intermittent, 2x Intermittent, 3x Intermittent, Telegraph, and Random
- Choice of M12 cable gland or M12 4-pin quick connect (-Q models) electrical connections
- Type 3R, IP65 enclosure



SelecTone Amplified Speaker®

MODEL 50GC

FEATURES

- Available in 24VAC/DC and 120VAC
- Adjustable between 64 dBa to 88 dBa @ 10' (74 dBa to 98 dBa @ 1m)
- Needs a UTM (32 switchable tones) or TM33-SD Custom Tone Module (single pre-recorded voice message, tone, or melody)
- Type 3R enclosure when used with the WB back box
- CSFM Approved



Vibratone® Horn

MODEL 350

FEATURES

- Available in 12VAC, 24VAC, 120VAC, and 240VAC*
- 350 is available in 12VAC, 24VAC, 120VAC, and 240VAC
- 100 dBa @ 10' (110 dBa @ 1m)
- Coded or sustained tones
- 350TR includes a gasketed, weatherproof trim ring for surface mount installations
- 350WB includes a watherproof back box for wall mount installations
- Type 4X and Type 12 when installed with surface mount trim ring (350TR)
- Type 4x when installed with panel mount gasket kit (k8435666A)
- Type 4x, IP65 enclosure, IP69K compliant when installed with waterproof back box (350WB)



350 Vibratone Horn



350TR Vibratone Horn with Weatherproof Trim Ring



350WB Vibratone Horn with Weatherproof Back Box



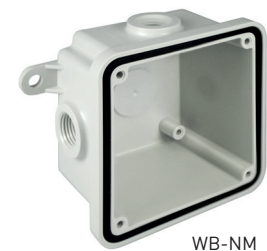
K8435666A Panel Mount Gasket Kit



*350TR is available in 24VAC and 120VAC. 350WB is avaiatble in 120VAC and 240VAC

Vibratone® Electric Horn

MODEL 450E



WB-NM



450E



FEATURES

- Available in 12-24VDC (Fire Regulated 16-33 VDC)
- 99 dBa @ 10' on axis (109 dBa @ 1m on axis)
- Coded or sustained tones
- No duty cycle or interval limitations
- Type 4X, IP66 when installed with Panel Mount Gasket (included) or optional Non-metallic Weatherproof Backbox (Model WB-NM)
- Marine Rated

StreamLine® Modular Electronic Sounder

MODELS SLM700 & SLM800

FEATURES

- Available in 12-24VAC/DC or 120-240VAC
- Choice of 64 selectable tones (32 per input selectable via DIP switch)
- Produces two tones at three adjustable tone levels
- SLM700; Adjustable volume between 76 dBa to 95 dBa @ 10' (86-105 dBa @ 1m)
- SLM800; Adjustable volume between 89 dBa to 105 dBa @ 10' (99-115 dBa @ 1m)
- Seven mounting base options
- Type 3R, IP65 enclosure



StreamLine® Modular Multicolor Multifunctional Low Profile Beacon

MODELS SLM1400 & SLM1450

FEATURES

- Available in 12-24VAC/DC or 120-240VAC
- SLM 1400 features an opaque lens and seven colors
- SLM1450 features a fresnel lens and seven colors
- Five flash patterns; Steady, 1x Flash, 3x Flash, 5x Flash, and Random
- Three light intensity levels: 33%, 66% or 100%
- 100,000 hour LED
- Seven mounting base options
- Type 4X, IP66 enclosure, IP69K compliant



StreamLine® Modular Multifunctional Low Profile LED Beacons

MODELS SLM300 & SLM350

FEATURES

- Available in 12-24VAC/DC or 120-240VAC
- SLM300 features an opaque lens
- SLM350 features a fresnel lens
- Three flash patterns; Steady, Flashing and Strobe
- Three light intensity levels; 33%, 66% or 100%
- 100,000 hour LED
- Seven mounting base options
- Type 4X, IP66 enclosure, IP69K compliant



Fireball® LED Warning Light

MODELS FB2LED & FB2LED-QC

FEATURES

- Available in 12-24VDC or 120/240VAC
- Quad-color models are available with a clear lens, four colors, and four flash patterns in one unit; 60 FPM, 120 FPM, Simulated Strobe, and Steady
- Single color models have three flash patterns; 60 FPM, 120FPM, and Steady
- 100,000 hour LED
- Type 4X, IP66 enclosure, IP69K compliant



StreamLine® Low Profile LED Light

MODELS LP22LED & LP22LED RGB

FEATURES

- Available in 12-24VAC/DC and 90-240VAC
- Multicolor models feature seven colors and steady burn
- Single color models have four flash patterns; Steady, Single Flash, Double Flash, and Triple Flash
- 50,000 hour LED
- Type 4X, IP66 Enclosure



Model Specification

MODEL	SPECIFICATIONS									
	TYPE	TONES	MOUNTING TYPE	DBA @10'	VOLTAGE	RATINGS	ELECTRICAL CONNECTION	VOLUME CONTROL	HOUSING COLOR	APPROVALS
350	Mechanical	Vibrating Horn Tone	Surface, Flush, Wall	100	12VAC, 24VAC, 120VAC, 240VAC	Varies by mounting options	Wire Leads	Inhibit Screw	Gray	UL, cUL, CSA
450E	Electronic	Electronic Horn Tone	Surface	99	12-24VDC	4X	Terminal Block	N/A	Light Gray	UL, cUL, UL Fire, ULC Fire, CSFM, UKCA
SLM700	Piezo Sounder	Multi-Tone, 32 Tones Per Channel, Configurable via DIP switch	Seven mounting base options	95	12-24VAC/DC or 120-240VAC**	3R, IP65	Terminal Block	3 Increments	Light Gray	UL, cUL, CE, UKCA
SLM800	Piezo Sounder	Multi-Tone, 64 Tones Per Channel, Configurable via DIP switch	Five mounting base options	105	12-24VAC/DC or 120-240VAC**	3R, IP65	Terminal Block	3 Increments	Light Gray	UL, cUL, CE, UKCA
PM22A	Electronic	Steady, Slow, Fast, 2x and 3x Intermittent, Telegraph, Random	Through Hole 30mm (1.18") diameter	82	12-24VAC/DC	3R, IP65	M12 4-Cond. 12" Cable or 4 pin Quick Connect	N/A	Light Gray	UL, cUL, CE, UKCA
PMA	Electronic	Continuous Electronic Buzzer	Through Hole 30mm (1.18") diameter	60	12-24VAC/DC or 48-240VAC**	3R, IP65, IP69K	Terminal Block	N/A	Light Gray	UL, cUL, CE, UKCA
PMAMT	Electronic	Continuous or Intermittent Electronic Buzzer	Through Hole 30mm (1.18") diameter	75	12-24VAC/DC or 48-240VAC**	3R, IP65, IP69K	Terminal Block	N/A	Light Gray	UL, cUL, CE, UKCA
50GC	Electronic	32 Tone UTM or TM33-SD custom tone module (purchased separately)	Dual Gang 4x 0.18" Dia. Fixing Centers Spaced 2.38" (Trim Ring Included)	64-88	24VAC/DC or 120VAC	3R w/ WB Backbox	Wire Leads	Potentiometer	Beige	UL, cUL, CSFM
LP4-09-028	Electronic	32 Tones	Panel or wall	82-100	9-28VDC	IP54 (IP65 w/ DBLP Base)	Wire Leads	Potentiometer	Light Gray	CE, UKCA

AUDIBLE SIGNALS

*Voltage is dependent on selected base (sold separately)

**IP69K with select bases SLMBS, SLMBP, and included SLM-RR accessory